



Government of India
Ministry of Earth Sciences
India Meteorological Department



Press Release
Date: 02nd December, 2025
Time of Issue: 1400 hours IST

Subject: (i) Under the influence of Depression, isolated very heavy rainfall likely over north coastal Tamil Nadu on 02nd December and isolated heavy rainfall over Tamil Nadu 03rd December.

(ii) Cold wave conditions very likely to prevail in isolated pockets over Punjab and north Madhya Maharashtra during 03rd-05th and Rajasthan during 05th-07th December, 2025.

Realised weather during past 24 hours ending at 0830 hours IST of today, the 02nd December, 2025:

- ❖ Heavy to very heavy rainfall at some places with isolated extremely heavy rainfall over Tamil Nadu.
- ❖ Dense fog (visibility 50-199 m): reported in isolated pockets of Meghalaya, Odisha, Himachal Pradesh, Manipur, Gangetic West Bengal.
- ❖ Cold wave conditions at isolated places over Punjab.

Weather Systems, Forecast and Warnings (refer to ANNEXURE I & II):

- ❖ Yesterday's Deep Depression (Remnant of Cyclonic Storm Ditwah) weakened into a Depression over southwest Bay of Bengal and adjoining areas of westcentral Bay of Bengal, North Tamil Nadu, Puducherry & South Andhra Pradesh coasts at 0530 hrs IST of today, the 02nd December. It moved slowly south-southwestwards with the speed of 3 kmph during past 6 hours and lay centered at 0830 hrs IST of today, the 02nd December 2025 over the same region, near latitude 12.8°N and longitude 80.5°E, about 40 km east-southeast of Chennai (India), 120 km northeast of Puducherry (India), 140 km northeast of Cuddalore (India) and 190 km south-southeast of Nellore (India). The minimum distance of the Centre of the Depression from north Tamil Nadu-Puducherry coasts is about 25 km. It is very likely to continue to move slowly southwestwards towards the north Tamil Nadu-Puducherry coasts and maintain its intensity of Depression during next 12 hours. Thereafter, while moving towards the coast it is very likely to weaken into a Well-marked low-pressure area during subsequent 12 hours.
- ❖ The **Western disturbance** as an upper air cyclonic circulation persist over north Pakistan in lower tropospheric level and the trough aloft in middle tropospheric level seen with its axis in middle tropospheric level roughly along Long. 70°E to the north of Lat. 27°N.
- ❖ An induced cyclonic circulation lay over south Himachal Pradesh & neighbourhood in lower tropospheric level.
- ❖ A fresh feeble Western Disturbance is likely to influence western Himalayan region from 05th December 2025.

Under the influence of these systems, the following weather is likely:

- ❖ **Tamil Nadu & Puducherry:** Light to moderate rainfall at most places with **heavy to very heavy rainfall at isolated places** over North Coastal Tamil Nadu is very likely on 2nd December and **heavy rainfall** at isolated places on 03rd December, 2025.
- ❖ **South Coastal Andhra Pradesh & Rayalaseema:** Light to moderate rainfall at most places with **heavy rainfall** at isolated places is very likely on 2nd December, 2025.
- ❖ **Kerala:** Light to moderate rainfall at most places with **heavy rainfall** at isolated places is very likely on 2nd and 3rd December, 2025

Temperature Conditions during past 24 hours till 0830 hours IST of today:

- ❖ **Minimum temperatures** are in the range of **less than 6°C** at most places over Jammu-Kashmir-Ladakh-Gilgit-Baltistan-Muzaffarabad; at many places over Himachal Pradesh; at isolated places over Uttarakhand, Punjab; in the **range of 6°-10°C** at many places over Uttar Pradesh, Haryana and north Rajasthan. **The lowest minimum temperature of 3.0 °C is reported at Faridkot (Punjab) over the plains of India.**
- ❖ **Minimum Temperature were** below normal (-1.6°C to -4.0°C) at isolated places over Punjab, Uttar Pradesh, West Rajasthan, West Madhya Pradesh, Maharashtra. **(refer to ANNEXURE IV)**

Forecast of minimum temperatures:

- ❖ No significant change in minimum temperature likely over many parts of Northwest India for next 24 hours, fall by 2-4°C during subsequent 4 days and no significant change thereafter.
- ❖ No significant change in minimum temperature likely over Central India for next 24 hours, fall by 2-3°C during subsequent 4 days and no significant change thereafter.
- ❖ Gradual fall in minimum temperature likely by 3-4°C over East India during next 4 days and no significant change thereafter.
- ❖ Gradual fall in minimum temperature likely by 2-3°C over Maharashtra during next 3 days and no significant change thereafter.
- ❖ No significant change in minimum temperature likely over Northeast India for next 3 days, fall by 2-3°C during subsequent 2 days and no significant change thereafter.

Dense Fog & Cold wave warning Warnings:

- ❖ **Cold wave conditions** very likely to prevail in isolated pockets over Punjab and north Madhya Maharashtra during 03rd-05th and north Rajasthan during 05th-07th December, 2025.
- ❖ **Dense fog conditions** very likely to prevail during early morning hours in isolated pockets of Himachal Pradesh, Assam & Meghalaya, Nagaland, Manipur, Mizoram & Tripura, during 03rd-05th; over Odisha on 03rd & 04th December.

Wind Warning, Sea Condition, Fisherman Warning:

Wind Warning

(a) Southwest and adjoining westcentral Bay of Bengal and along & off north Tamil Nadu, Puducherry and South Andhra Pradesh Coasts

Squally wind speed reaching 45-55 gusting to 65 kmph is very likely to prevail till evening of today, the 2nd December and gradually decrease thereafter becoming 35-45 gusting to 55 kmph by 3rd morning.

(b) Along & off south Tamil Nadu coast, Gulf of Mannar, Comorin area and north Sri Lanka coast

Squally wind speed reaching 40-50 gusting to 60 kmph is very likely to prevail till evening of today, the 2nd December and gradually decrease thereafter becoming 35-45 gusting to 55 kmph by 3rd morning.

Sea Condition:

(a) Southwest and adjoining westcentral Bay of Bengal and along & off north Tamil Nadu, Puducherry and South Andhra Pradesh Coasts:

Very Rough to Rough Sea conditions are likely to prevail till 3rd December morning and gradually improve thereafter.

(b) Along & off south Tamil Nadu coast, Gulf of Mannar, Comorin area and north Sri Lanka coast

Very Rough to Rough Sea conditions are likely to prevail till 3rd December morning and gradually improve thereafter.

Fishermen Warning:

- (a) Total suspension of fishing operations over southwest and adjoining westcentral Bay of Bengal and along & off Tamil Nadu, Puducherry, south coastal Andhra Pradesh & north Sri Lanka coasts, Gulf of Mannar and Comorin area till 3rd December morning.
- (b) Those out at sea should avoid southwest and adjoining westcentral Bay of Bengal and along & off Tamil Nadu, Puducherry, south coastal Andhra Pradesh & north Sri Lanka coasts, Gulf of Mannar and Comorin area till 3rd December morning.

ii) Weather conditions and forecast over Delhi/NCR during 02nd December – 05th December, 2025 (ANNEXURE III)

For more details, kindly refer National Weather Bulletin:

https://mausam.imd.gov.in/responsive/all_india_forecast_bulletin.php

For District wise warnings refer: <https://mausam.imd.gov.in/responsive/districtWiseWarningGIS.php>

For Fishermen warning refer <https://rsmcnewdelhi.imd.gov.in/fishermen-warning.php>

Significant rainfall recorded (in cm) (from 0830 hours IST of yesterday to 0830 hours IST of today):

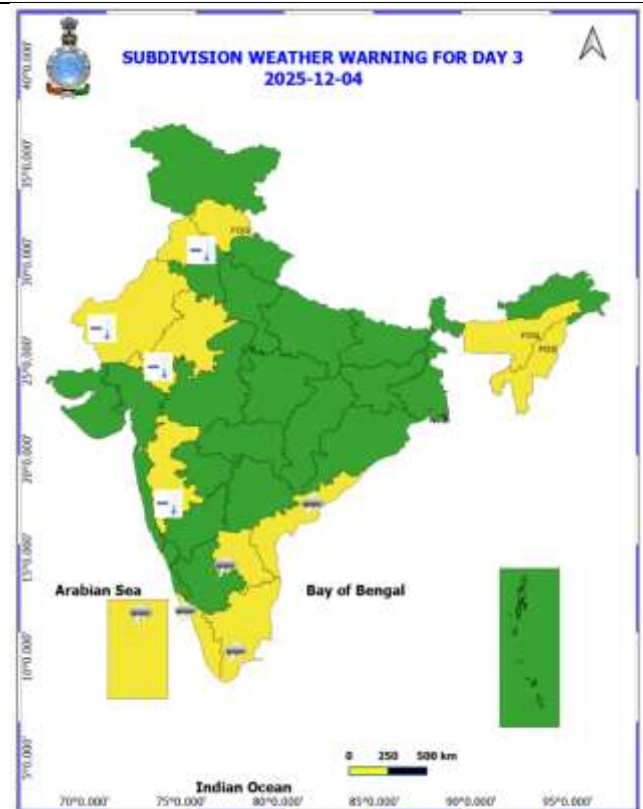
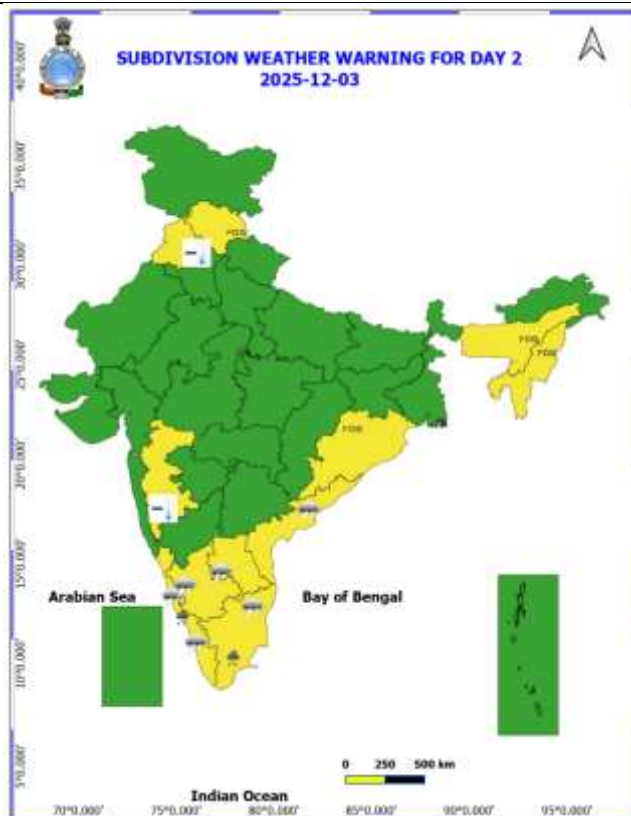
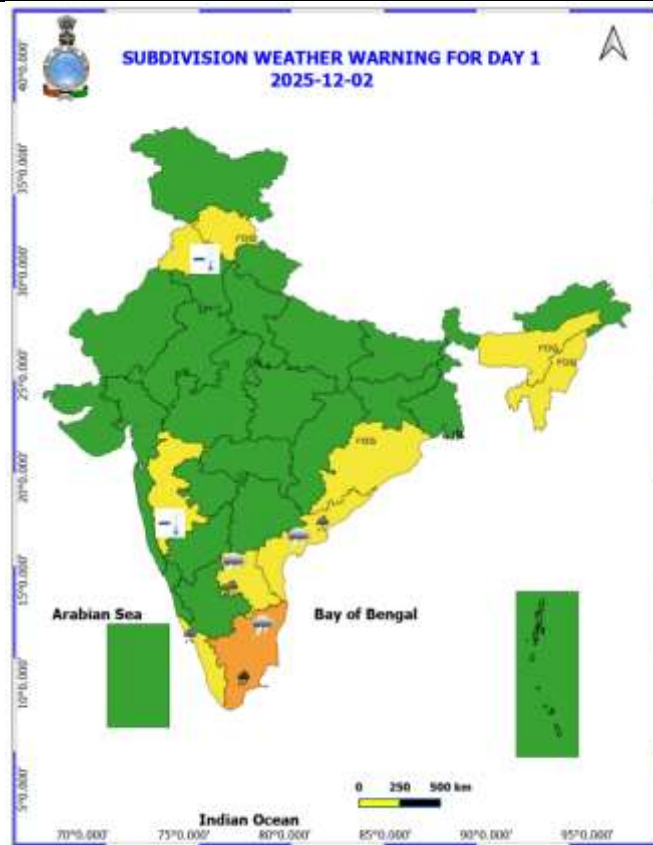
- ❖ **Tamil Nadu, Puducherry & Karaikal:** Ennore Zone 1 (Chennai) 26, Ponneri (dist Tiruvallur) 21; Ennore AWS (dist Tiruvallur), Perambur (dist Chennai), Chennai Collectorate Bu (dist Chennai) 20 Each; Dgp Office (dist Chennai), Chennai(n) (dist Chennai), Red Hills (dist Tiruvallur) 18 Each; Gummidipoondi (dist Tiruvallur), Ayanavaram Taluk Office (dist Chennai), Cd Hospital TondaiPET (dist Chennai) 17 Each; Puzhal ARG (dist Tiruvallur) 16; Cholavaram (dist Tiruvallur), Mgr Nagar (dist Chennai) 14 Each; Anna University (dist Chennai) 13; Anna Uty ARG (dist Chennai), Sholinganallur (dist Chennai) 11 Each; Chennai AP (dist Chennai), Sivakasi (dist Virudhunagar), Hindusthan University (dist Chengalpattu), Alandur (dist Chennai), Avadi (dist Tiruvallur) 9 Each; Taramani ARG (dist Chennai) 8; Kolapakkam ARG (dist Chengalpattu), Ambathur (dist Chennai) 7 Each; Satyabama Uty ARG (dist Chengalpattu), Poonamalle ARG (dist Tiruvallur) 6 Each; Kelambakkam (dist Chengalpattu), Poonamallee (dist Tiruvallur), Tiruvallur (dist Tiruvallur), ThamaraiPakkam (dist Tiruvallur), Jaya Engg College AWS (dist Tiruvallur) 5 Each; Koratur (dist Tiruvallur) 4;
- ❖ **Coastal Andhra Pradesh & Yanam:** Nellore (dist Spsr Nellore) 5;
- ❖ **Rayalaseema:** Sullurpeta (dist Tirupati), Tada (dist Tirupati) 5 Each; Venkatagiri (dist Tirupati), Gudur (dist Tirupati), Satyavedu (dist Tirupati), Thottambedu (dist Tirupati) 4 Each.

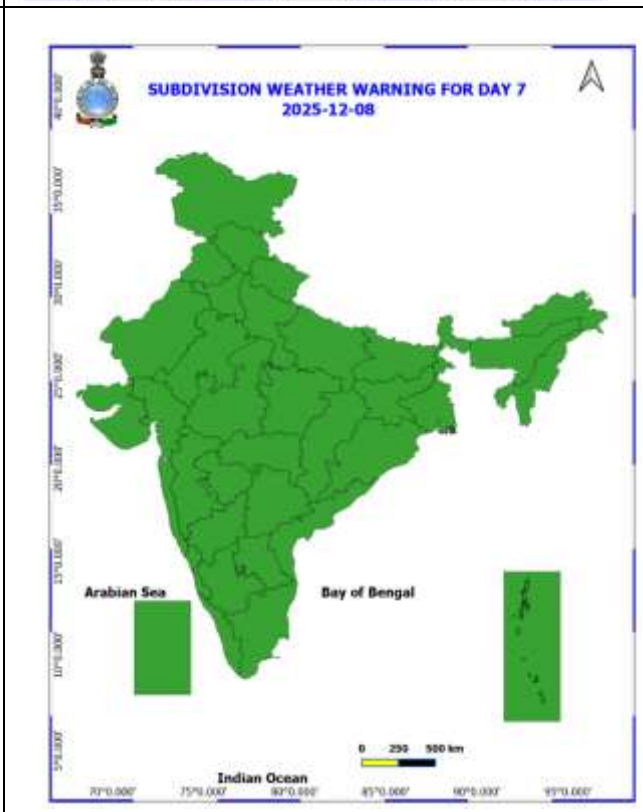
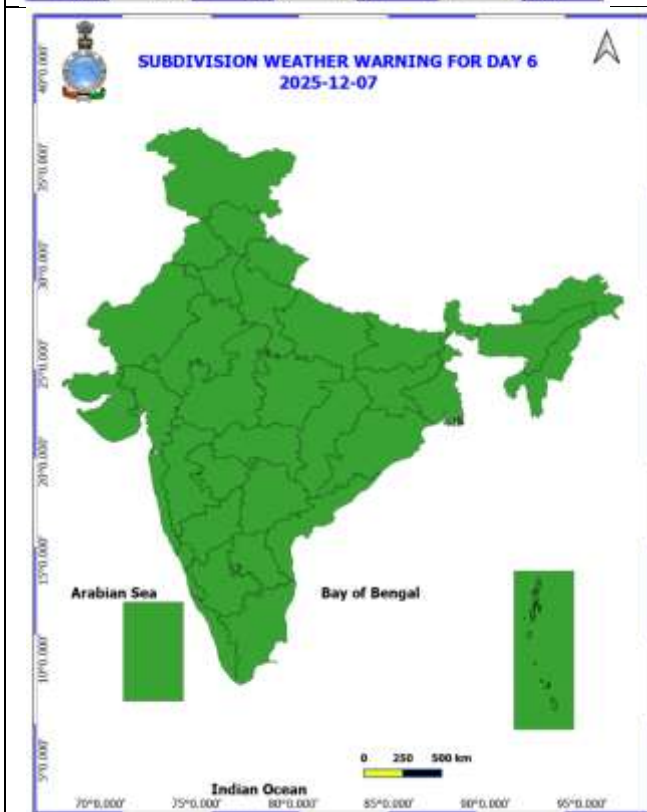
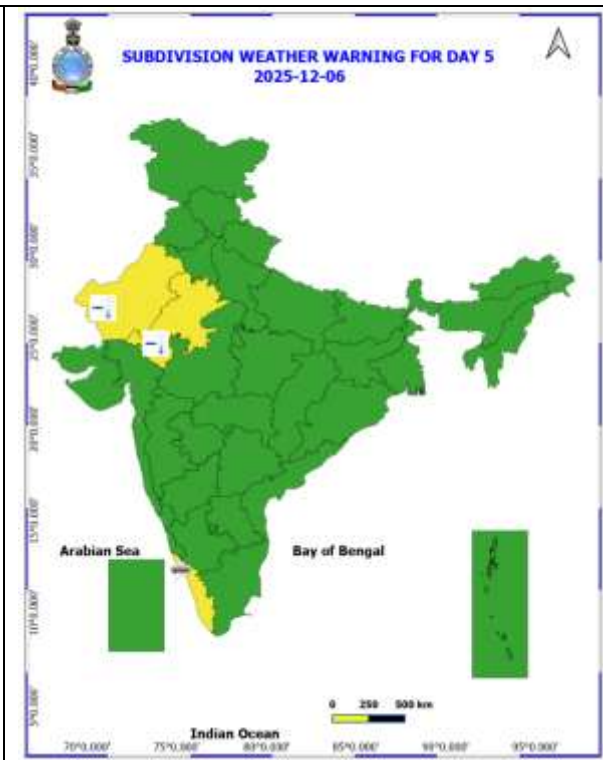
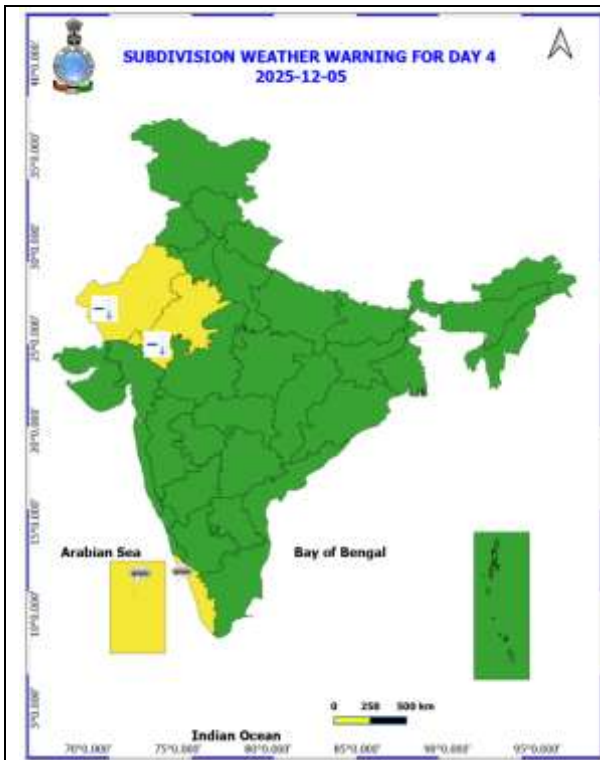
Visibility reported (≤ 200 m) (in meter):

- ❖ **Meghalaya:** Barapani-50 m
- ❖ **Odisha:** Rourkela 50m; Jharsuguda 100m;
- ❖ **Himachal Pradesh:** Bilaspur 50m, Sundernagar 70m, Mandi 100m.
- ❖ **Manipur:** Imphal-100 m
- ❖ **Gangetic West Bengal:** Durgapur 150m

Table-1								
7 Days Rainfall Forecast								
S.No.	Subdivision	2- Dec	3- Dec	4- Dec	5- Dec	6- Dec	7- Dec	8- Dec
		Day 1	Day 2	Day 3	Day 4	Day 5	Day 6	Day 7
1	ANDAMAN & NICOBAR ISLANDS	ISOL	DRY	ISOL	SCT	FWS	FWS	SCT
2	ARUNACHAL PRADESH	DRY	DRY	DRY	DRY	DRY	DRY	DRY
3	ASSAM & MEHGHALAYA	DRY	DRY	DRY	DRY	DRY	DRY	DRY
4	NAGALAND, MANIPUR, MIZORAM AND TRIPURA	DRY	DRY	DRY	DRY	DRY	DRY	DRY
5	SUB HIMALAYAN WEST BENGAL & SIKKIM	ISOL	ISOL	DRY	DRY	DRY	DRY	DRY
6	GANGETIC WEST BENGAL	DRY	DRY	DRY	DRY	DRY	DRY	DRY
7	ODISHA	DRY	DRY	DRY	DRY	DRY	DRY	DRY
8	JHARKHAND	DRY	DRY	DRY	DRY	DRY	DRY	DRY
9	BIHAR	DRY	DRY	DRY	DRY	DRY	DRY	DRY
10	EAST UTTAR PRADESH	DRY	DRY	DRY	DRY	DRY	DRY	DRY
11	WEST UTTAR PRADESH	DRY	DRY	DRY	DRY	DRY	DRY	DRY
12	UTTARAKHAND	DRY	DRY	DRY	ISOL	DRY	ISOL	ISOL
13	HARYANA, CHANDIGARH & DELHI	DRY	DRY	DRY	DRY	DRY	DRY	DRY
14	PUNJAB	DRY	DRY	DRY	DRY	DRY	DRY	DRY
15	HIMACHAL PRADESH	DRY	DRY	DRY	ISOL	DRY	ISOL	DRY
16	JAMMU AND KASHMIR AND LADAKH	DRY	DRY	DRY	ISOL	DRY	DRY	ISOL
17	WEST RAJASTHAN	DRY	DRY	DRY	DRY	DRY	DRY	DRY
18	EAST RAJASTHAN	DRY	DRY	DRY	DRY	DRY	DRY	DRY
19	WEST MADHYA PRADESH	DRY	DRY	DRY	DRY	DRY	DRY	DRY
20	EAST MADHYA PRADESH	DRY	DRY	DRY	DRY	DRY	DRY	DRY
21	GUJRAT REGION	DRY	DRY	DRY	DRY	DRY	DRY	DRY
22	SAURASHTRA & KUTCH	DRY	DRY	DRY	DRY	DRY	DRY	DRY
23	KONKAN & GOA	DRY	DRY	DRY	DRY	DRY	DRY	DRY
24	MADHYA MAHARASHTRA	DRY	DRY	DRY	DRY	DRY	DRY	DRY
25	MARATHWADA	DRY	DRY	DRY	DRY	DRY	DRY	DRY
26	VIDARBHA	DRY	DRY	DRY	DRY	DRY	DRY	DRY
27	CHHATTISGARH	ISOL	DRY	DRY	DRY	DRY	DRY	DRY
28	COASTAL ANDHRA PRADESH	FWS	FWS	ISOL	ISOL	ISOL	ISOL	ISOL
29	TELANGANA	DRY	DRY	DRY	DRY	DRY	DRY	DRY
30	RAYALASEEMA	SCT	SCT	SCT	ISOL	ISOL	ISOL	ISOL
31	TAMILNADU & PUDUCHERRY	SCT	FWS	SCT	ISOL	ISOL	ISOL	ISOL
32	COSTAL KARNATAKA	ISOL	SCT	SCT	ISOL	DRY	DRY	DRY
33	NORTH INTERIOR KARNATAKA	DRY	DRY	ISOL	DRY	DRY	DRY	DRY
34	SOUTH INTERIOR KARNATAKA	ISOL	SCT	ISOL	ISOL	DRY	DRY	DRY
35	KERALA AND MAHE	SCT	FWS	FWS	SCT	SCT	ISOL	ISOL
36	LAKSHADWEEP	SCT	SCT	FWS	FWS	SCT	SCT	SCT

- As the lead period increases forecast accuracy decrease.





- Action may be taken based on ORANGE AND REDCOLOUR warnings.
- Vulnerable regions likely urban and hilly areas action may be initiated for heavy rainfall warning.
- As the lead period increases forecast accuracy decreases.

Detailed districtwise Multi Hazard weather warning for next five days available at <https://mausam.imd.gov.in/responsive/districtWiseWarningGIS.php>

Weather forecast over Delhi/NCR during 02nd December to 05th December 2025**Past Weather:**

There has been appreciably rise in maximum temperatures upto 1-2°C and in minimum temperatures upto 2-4°C during the past 24 hours over Delhi. The maximum and minimum temperatures over Delhi were around 22 to 26°C and 09 to 11°C, respectively. The minimum temperatures are appreciably below normal (-3.1 to -5.0 °C) at many places and markedly below normal (-5.1 or less) at a few places over Delhi. The maximum temperatures were below normal (-1.6 to -3.0 °C) at many places and normal (-1.5 to 1.5°C) at a few places over Delhi. Mainly clear sky conditions with predominant surface wind from the northwest direction, with a wind speed up to 08 kmph, prevailed during the past 24 hours. Mainly clear sky conditions with wind from the southwest direction with a wind speed up to 10 kmph prevailed over the region in the forenoon today.

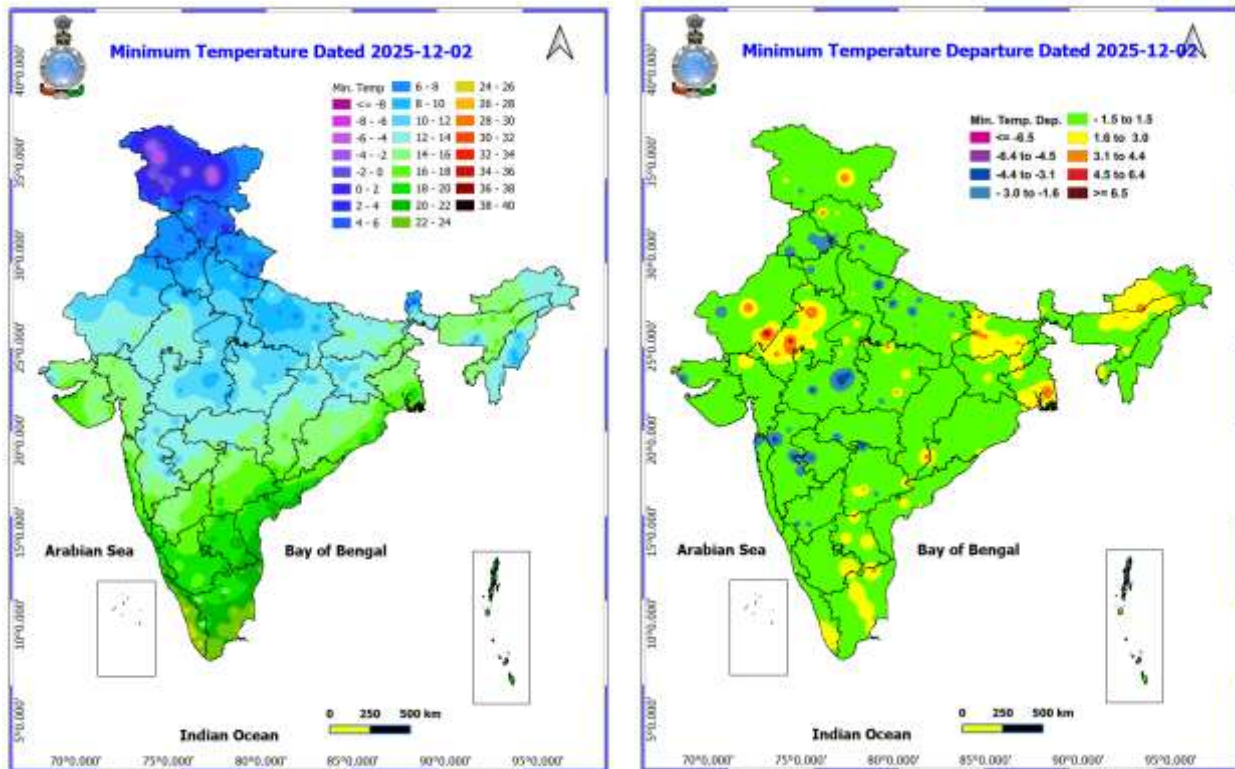
Weather Forecast:

02.12.2025: Mainly clear sky. Mist/Haze during the night. The maximum temperatures are likely to be in the range of 25 to 27°C. The maximum temperatures will be above normal (0.3 to 1.7 °C) over Delhi. The predominant surface wind is likely to be from the southwest direction with calm wind gradually increase, becoming less than 05 kmph during the afternoon hours. The wind speed will gradually increase up to 10 kmph from the north direction during the evening and night.

03.12.2025: Mainly clear sky. Shallow fog during morning hours. The maximum and minimum temperatures over Delhi are likely to be in the range of 23 to 25°C and 07 to 09°C respectively. The minimum temperatures will be below normal (-0.5 to -2.5°C), and the maximum temperatures will be below normal (-0.3 to -2.3°C) over Delhi. The predominant surface wind is likely to be from the northwest direction with calm wind gradually increasing to up to 05 kmph during morning hours. The wind speed will increase, becoming less than 15 kmph from the northwest direction in the afternoon. The wind speed will decrease, becoming less than 10 kmph from the northwest direction during the evening and night.

04.12.2025: Mainly clear sky. Shallow fog during morning hours. The maximum and minimum temperatures over Delhi are likely to be in the range of 22 to 24°C and 06 to 08°C respectively. The minimum temperatures will be will be below normal (-1.5 to -3.5 °C), and the maximum temperatures will be below normal (-1.3 to -3.3 °C) over Delhi. The predominant surface wind is likely to be from the northwest direction with a wind speed up to 10 kmph during morning hours. The wind speed will remain same up to 10 kmph from the northwest direction in the afternoon. The wind speed will be less than 10 kmph from the northwest direction during the evening and night.

05.12.2025: Partly cloudy sky. Shallow fog during morning hours. The maximum and minimum temperatures over Delhi are likely to be in the ranges of 22 °C to 24 °C and 05°C to 07 °C, respectively. The minimum temperatures will be below normal (-1.25 to -4.5 °C), and the maximum temperature will be below normal (-1.3 to -3.3 °C) over Delhi. The predominant surface wind is likely to be from the northwest direction, with wind speeds of up to 10 kmph during the morning hours. The wind speed will increase up to 15 kmph from the northwest direction in the afternoon. The predominant surface wind is likely to be from the northwest direction with wind speed up to 10 kmph during the evening and night.



Impact & Action Suggested due to

Isolated heavy to very heavy rain and strong winds (coastal districts of north Tamil Nadu, Puducherry and south Andhra Pradesh) up to 2nd December evening.

Impact Expected:

- ❖ Breaking of tree branches, uprooting of small trees. Damage to orchards, horticulture & floriculture, standing crops including banana, papaya and drumstick trees due to inundation, winds and sea spray.
- ❖ Damage to Kutcha roads and culverts.
- ❖ Inundation/ water logging in low-lying areas in coastal districts due to heavy rainfall and flash flood. Flooding of escape routes and damage to salt pans.
- ❖ Riverine flooding in some river catchments. Please refer advisories by Central Water Commission in this regard.
- ❖ Occasional reduction in visibility due to heavy rainfall.
- ❖ Disruption of traffic due to water logging.
- ❖ Localized Landslides/Mudslides.

Action suggested:

- ❖ Total suspension of fishing operations.
- ❖ People in affected areas to remain indoors.
- ❖ Take safe shelters; do not take shelter under trees, as there could be lightning.
- ❖ Movement in motor boats unsafe.
- ❖ Judicious regulation of offshore/onshore operations
- ❖ People are advised to keep a watch on the weather for worsening conditions and be ready to move to safer places accordingly.
- ❖ Tourism and recreational activities to be regulated.
- ❖ Surface transport and helicopter services to be regulated.

Agromet advisories for likely impact of Heavy / Heavy to Very Heavy Rainfall

- In **Tamil Nadu**, drain out excess rain water from the fields of rice, groundnut, sugarcane, cotton, black gram, maize and vegetables and plantations of coconut, banana, areca nut, mango, rubber, cinnamon and black pepper. Strengthen irrigation channels and field bunds in rice to avoid crop lodging. Provide support to banana plants with wooden poles to prevent them from falling.
- In **Andhra Pradesh**, provide extensive drainage in *rabi* rice nurseries, transplanted rice, Bengal gram, red gram, maize, jowar, already sown crops of ragi, chickpea, black gram, vegetables and orchards. Keep the harvested produce of rice, maize, groundnut and cotton to safer places. Postpone picking of cotton, harvesting of rice and sowing of ragi, chickpea & black gram.
- In **Kerala**, make necessary arrangements to drain out excess rain water from the fields of rice, vegetables and plantations of banana, coconut, cardamom and black pepper. Carry out propping in banana to prevent their falling due to heavy rainfall. Undertake staking for vegetables grown in pandals.

Livestock / Fishery

- Keep the animals inside the shed during heavy rainfall and provide them balanced feed.
- Store feed and fodder in a safe place to prevent spoilage.
- Construct an outlet with proper netting around the ponds to drain out excess water, thereby preventing fish from escaping in case of overflow.

Agromet advisories for likely impact of Thunderstorm / Gusty Winds

- Provide mechanical support to horticultural crops and staking or support to vegetables and young fruit plants / fruit-bearing plants to avoid lodging due to strong winds.

Agromet advisories for likely impact of Cold Waves/ Low Temperatures

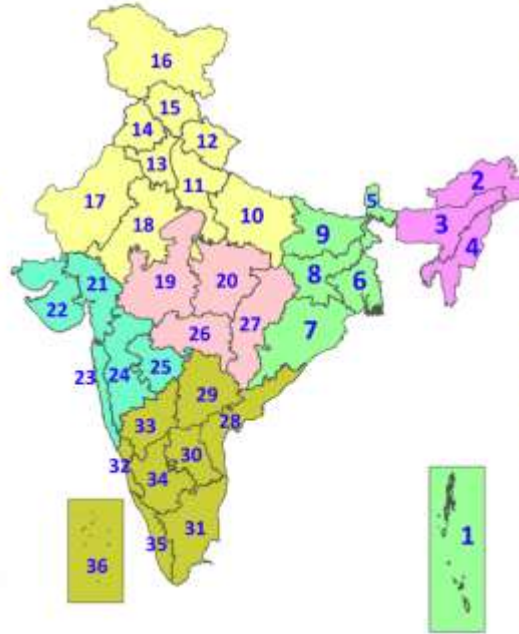
- In **Punjab, Rajasthan** and **north Madhya Maharashtra**, apply light and frequent irrigation to the standing crops in the evening to protect the crops from low temperature stress. Use mulching and cover vegetable nurseries and young fruit plants with straw / polythene sheets to maintain optimum soil temperature. Cover banana bunches with 6% perforated plastic bags for protection from low temperatures. In **north Madhya Maharashtra**, erect shade nets around grape vines and pomegranate orchards to minimize cold impact.

Legends & abbreviations:

- ❖ **Heavy Rain:**64.5-115.5mm; **Very Heavy Rain:**115.6-204.4mm; **Extremely Heavy Rain:** >204.4mm.
- ❖ **Obsy:** Observatory; Automatic Weather Station; **ARG:** Automatic Rain Gauge; **dist:** District; **NH:** National Highway; **KVK:** Krishi Vigyan Kendra; **DVC:** Damodar Valley Corporation; **PTO:** Part Time Office, **Aero:** Aerodrome, **IAF:** Indian Air Force.
- ❖ **Region wise classification of meteorological Sub-Divisions:**
 - **Northwest India:** Western Himalayan Region (Jammu-Kashmir-Ladakh-Gilgit-Baltistan-Muzaffarabad, Himachal Pradesh and Uttarakhand); Punjab, Haryana-Chandigarh-Delhi; West Uttar Pradesh, East Uttar Pradesh, West Rajasthan and East Rajasthan.
 - **Central India:** West Madhya Pradesh, East Madhya Pradesh, Vidarbha and Chhattisgarh.
 - **East India:** Bihar, Jharkhand, Sub-Himalayan West Bengal & Sikkim; Gangetic West Bengal, Odisha and Andaman & Nicobar Islands.
 - **Northeast India:** Arunachal Pradesh, Assam & Meghalaya and Nagaland, Manipur, Mizoram & Tripura.
 - **West India:** Gujarat Region, Saurashtra & Kutch, Konkan & Goa, Madhya Maharashtra and Marathawada.
 - **South India:** Coastal Andhra Pradesh & Yanam, Telangana, Rayalaseema, Coastal Karnataka, North Interior Karnataka, South Interior Karnataka, Kerala & Mahe, Tamil Nadu, Puducherry & Karaikal and Lakshadweep.

LEGENDS

1. अंडमान और निकोबार द्वीपसमूह
2. अरुणाचल प्रदेश
3. असम और मेघालय
4. नागालैंड, मणिपुर, मिजोरम और त्रिपुरा
5. उप-हिमालयी पश्चिम बंगाल और सिक्किम
6. गंगीय पश्चिम बंगाल
7. ओडिशा
8. झारखंड
9. बिहार
10. पूर्वी उत्तर प्रदेश
11. पश्चिम उत्तर प्रदेश
12. उत्तराखंड
13. हरियाणा, चंडीगढ़ और दिल्ली
14. पंजाब
15. हिमाचल प्रदेश
16. जम्मू और कश्मीर और लद्दाख
17. पश्चिम राजस्थान
18. पूर्वी राजस्थान
19. पश्चिम मध्य प्रदेश
20. पूर्वी मध्य प्रदेश
21. गुजरात
22. सौराष्ट्र
23. कोंकण और गोवा
24. मध्य महाराष्ट्र
25. मराठवाड़ा
26. विदर्भ
27. छत्तीसगढ़
28. तटीय आंध्र प्रदेश और यनम
29. तेलंगाना
30. रायलसीमा
31. तमिलनाडु, पुडुचेरी और कराईकल
32. तटीय कर्नाटक
33. आंतरिक उत्तरी कर्नाटक
34. आंतरिक दक्षिणी कर्नाटक
35. केरल और माहे
36. लक्षद्वीप



1. Andaman & Nicobar Islands
2. Arunachal Pradesh
3. Assam & Meghalaya
4. Nagaland, Manipur, Mizoram & Tripura
5. Sub-Himalayan West Bengal & Sikkim
6. Gangetic West Bengal
7. Odisha
8. Jharkhand
9. Bihar
10. East Uttar Pradesh
11. West Uttar Pradesh
12. Uttarakhand
13. Haryana, Chandigarh & Delhi
14. Punjab
15. Himachal Pradesh
16. Jammu & Kashmir and Ladakh
17. West Rajasthan
18. East Rajasthan
19. West Madhya Pradesh
20. East Madhya Pradesh
21. Gujarat
22. Saurashtra
23. Konkan & Goa
24. Madhya Maharashtra
25. Marathwada
26. Vidarbha
27. Chhattisgarh
28. Coastal Andhra Pradesh & Yanam
29. Telangana
30. Rayalaseema
31. Tamilnadu, Puducherry & Karaikal
32. Coastal Karnataka
33. North Interior Karnataka
34. South Interior Karnataka
35. Kerala & Mahe
36. Lakshadweep

SPATIAL DISTRIBUTION (% of Stations reporting)

% Stations	Category	% Stations	Category
76-100	Widespread (WS/Most Places)	26-50	Scattered (SCT/A Few Places)
51-75	Fairly Widespread (FWS/Many Places)	1-25	Isolated (ISOL)

- | | | |
|----------------------|----------------------|--------------|
| Fog | Heavy Snow | Cold Wave |
| Heavy Rain | Dust Storm | Cold Day |
| Very Heavy Rain | Heat Wave | Ground Frost |
| Extremely Heavy Rain | Warm Night | |
| Thunder & Lightning | Hot Day | |
| Hailstorm | Hot & Humid | |
| Dust Raising Winds | Strong Surface Winds | |

COLOUR CODED WARNING

No Warning (No Action)
Watch (Be Aware)
Alert (Be Prepared To Take Action)
Warning (Take Action)

Probabilistic Forecast

Terms	Probability of Occurrence (%)
Unlikely	< 25
Likely	25 - 50
Very Likely	50 - 75
Most Likely	> 75

* Red colour warning does not mean "Red Alert", Red colour warning means "Take Action".
Forecast and Warning for any day is valid from 0830 hours IST of day till 0830 hours IST of next day.
For more details, kindly visit <https://mausam.imd.gov.in> or contact: 011-2434-4599
(Service to the Nation since 1875)

DEFINITION/CRITERIA

Rain/ Snow *	<p>Heavy: 64.5 to 115.5 mm/cm *</p> <p>Very Heavy: 115.6 to 204.4 mm/cm*</p> <p>Extremely Heavy: > 204.4 mm/cm *</p>
Heat Wave	<p>When maximum temperature of a station reaches $\geq 40^{\circ}\text{C}$ for plains and $\geq 30^{\circ}\text{C}$ for hilly regions</p> <p>(a) Based on Departure from normal</p> <p>Heat Wave: Maximum Temperature Departure from normal 4.5°C to 6.4°C.</p> <p>Severe Heat Wave: Maximum Temperature Departure from normal $\geq 6.5^{\circ}\text{C}$</p> <p>(b). Based on Actual maximum temperature</p> <p>Heat Wave: When actual maximum temperature $\geq 45^{\circ}\text{C}$.</p> <p>Severe Heat Wave: When actual maximum temperature $\geq 47^{\circ}\text{C}$</p> <p>(c). Criteria for heat wave for coastal stations</p> <p>When maximum temperature departure is $>4.5^{\circ}\text{C}$ from normal. Heat Wave may be described provided maximum temperature $\geq 37^{\circ}\text{C}$</p>
Warm Night	<p>When maximum temperature remains 40°C</p> <p>Warm Night: When minimum temperature departure 4.5°C to 6.4°C.</p> <p>Severe Warm Night: When minimum temperature departure $>6.4^{\circ}\text{C}$.</p>
Cold Wave	<p>When minimum temperature of a station $\leq 10^{\circ}\text{C}$ for plains and $\leq 0^{\circ}\text{C}$ for hilly regions.</p> <p>(a). Based on departure</p> <p>Cold Wave: Minimum Temperature Departure from normal -4.5°C to -6.4°C.</p> <p>Severe Cold Wave: Minimum Temperature Departure from normal $\leq -6.5^{\circ}\text{C}$</p> <p>(b) Based on actual Minimum Temperature (for Plains only)</p> <p>Cold Wave : When Minimum Temperature is $\leq 4.0^{\circ}\text{C}$</p> <p>Severe Cold Wave: When Minimum Temperature is $\leq 2.0^{\circ}\text{C}$</p> <p>(c) For Coastal Stations</p> <p>When Minimum Temperature departure is $\leq -4.5^{\circ}\text{C}$ & actual Minimum Temperature is $\leq 15^{\circ}\text{C}$</p>
Cold Day	<p>When minimum temperature of a station $\leq 10^{\circ}\text{C}$ for plains and $\leq 0^{\circ}\text{C}$ for hilly regions</p> <p>Based on departure</p> <p>Cold Day: Maximum Temperature Departure from normal -4.5°C to -6.4°C.</p> <p>Severe Cold Day: Maximum Temperature Departure from normal $\leq -6.5^{\circ}\text{C}$</p>
Fog	<p>Phenomenon of small droplets suspended in air and the horizontal visibility $< 1\text{km}$</p> <p>Moderate Fog: When the visibility between 500-200 metres</p> <p>Dense Fog: when the visibility between 50- 200 metres</p> <p>Very Dense Fog: when the visibility < 50 metres</p>
Thunderstorm	<p>Sudden electrical discharges manifested by a flash of light (Lightning) and a sharp rumbling sound (thunder)</p>
Dust/Sand Storm	<p>An ensemble of particles of dust or sand energetically lifted to great heights by a strong and turbulent wind.</p>
Frost	<p>Ice deposits on ground</p> <p>Air temperature $\leq 4^{\circ}\text{C}$ (over Plains)</p>
Squall	<p>A strong wind that rises suddenly, lasts for atleast 1 minute.</p> <p>Moderate: Wind speed 52-61 kmph</p> <p>Severe: Wind speed 62-67 kmph</p> <p>Very Severe: Wind speed >67 kmph</p>
Sea State	<p>Effect of various waves in the sea over specific area</p> <p>Rough to very rough: Wind speed 41-62 kmph (22-33 knots) & Wave height 2.5-6 metre</p> <p>High to very high: Wind speed 63-117 kmph (34-63 knots) & Wave height 6-14 metre</p> <p>Phenomenal: Wind speed >117 kmph (>63 knots) & Wave height >14 metre</p>
Cyclone	<p>Cyclonic Storm: Wind speed 62-87 kmph (34-47 knots)</p> <p>Severe Cyclonic Storm: Wind speed 88-117 kmph (48-63 knots)</p> <p>Very Severe Cyclonic Storm: Wind speed 118-165 kmph (64 - 89 knots)</p> <p>Extremely Severe Cyclonic Storm: Wind speed 166-220 kmph (90 -119 knots)</p> <p>Super Cyclone Storm: Wind speed >220 kmph (>119 knots)</p>

* Red colour warning does not mean "Red Alert", Red colour warning means "Take Action".
Forecast and Warning for any day is valid from 0830 hours IST of day till 0830 hours IST of next day.
For more details, kindly visit <https://mausam.imd.gov.in> or contact: 011-2434-4599
(Service to the Nation since 1875)